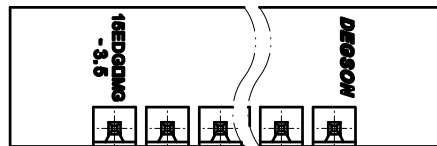
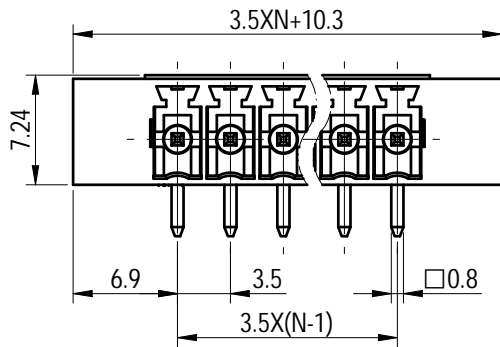
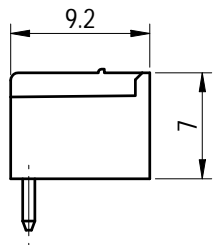
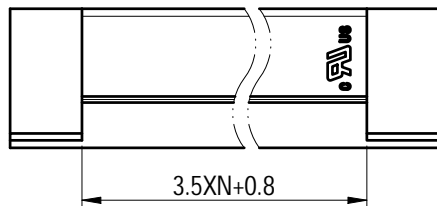
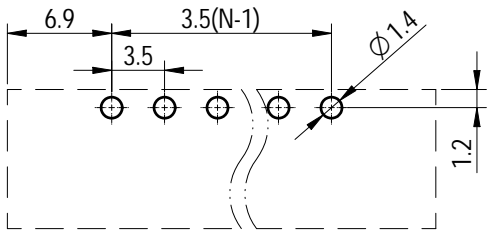


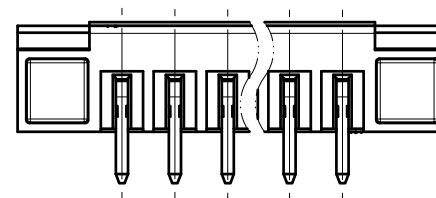
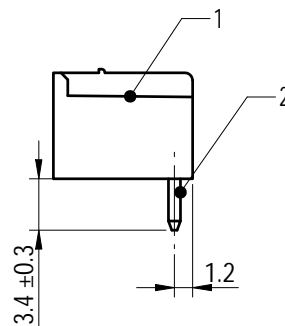
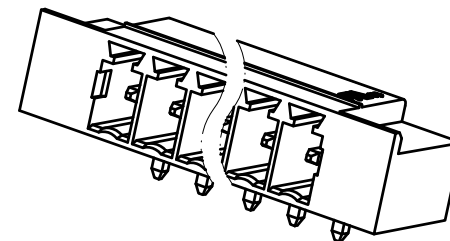
PCB LAYOUT



未注公差/General tolerances(mm)

0	>3	>6	>10	>18	>30	>50	>80	>120	>180	>250	>315	>400	>500	0.1/10 ±2'
~3	~6	~10	~18	~30	~50	~80	~120	~180	~250	~315	~400	~500	~500	
±0.12	±0.18	±0.22	±0.26	±0.31	±0.37	±0.57	±0.80	±0.93	±1.05	±1.15	±1.60	±2.20	±2.50	

Please refer to the 3D model for those unmarked dimensions



2	Pin	Copper Alloy	Sn Plated
1	Housing	PA66	UL94V-0
ITEM	NAME OF PART	MATERIAL	NOTES

UL 标准/UL Standard:		B	C	D
额定电压/电流/Rated Voltage(V)/Current(A)		300/8	/	300/8
IEC 标准/IEC Standard:				
过压类别/Overvoltage Category/污染等级/Pollution Degree		III/3	III/2	II/2
额定电压/电流/Rated Voltage(V)/Current(A)		/	/	250/7
额定脉冲电压(KV)/Rate Impulse Voltage(KV)		/	/	2.5
间距/Pitch(mm)/线数范围/Poles		3.5/N=02~12P		
使用温度范围/Operating temperature(°C)		-40~+105		
符合 RoHS 环保要求/Conform to RoHS		Yes		



MATERIAL: -	SURFACE/COLOR: -
MAT NO./REV: -	/ 01 MAT STATUS: 批量

APPD: 兰春华	2022.07.14
CHKD: 陈招	2022.07.13
DRFT: 岑凯	2022.07.13

DRAWING NO. 200025166		TYPE CUSTOMER DRAWING		DRAWING STATUS 已发布		SCALE 2:1		SHEET 1/1	
-----------------------	--	-----------------------	--	--------------------	--	-----------	--	-----------	--

00	/	1X初版发行	岑凯	2022.07.13
REV	ECN	DESCRIPTION	DRFT	DATE



Transfer or duplication of this document as well as the utilization or communication of its contents are prohibited unless written authorization is granted. All rights reserved for patent, utility model or designs registrations. 非经书面授权, 严禁禁止转让、复制、利用、交加本文件的内容, 一经发现将负法律责任。本公司保留对涉及发明、实用新型和外观设计的所有权利。