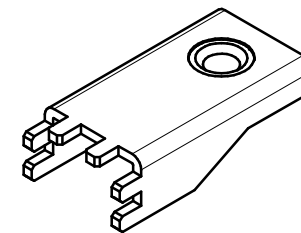
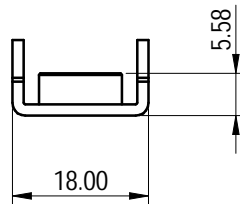
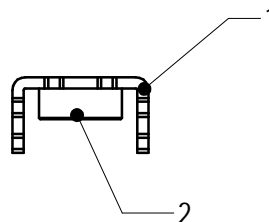
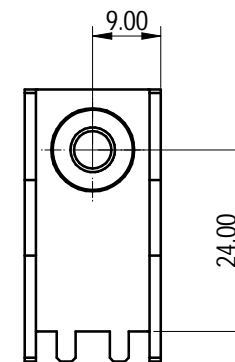
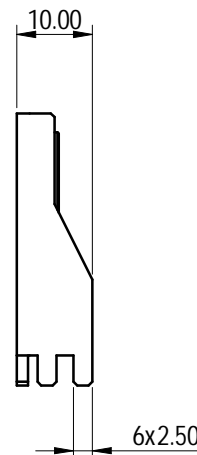
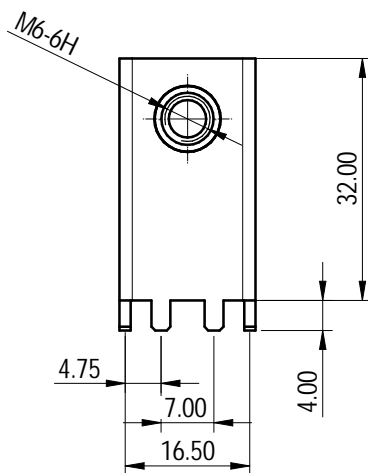
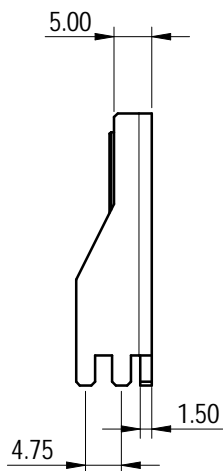


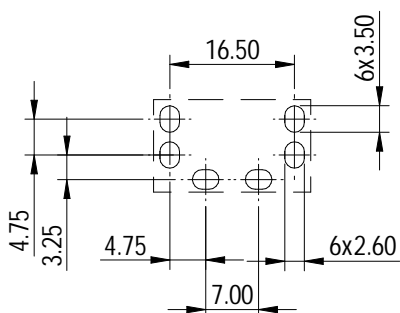
未注公差/General tolerances (mm)											0.1/10			
0 ~ 3	>3 ~ 6	>6 ~ 10	>10 ~ 18	>18 ~ 30	>30 ~ 50	>50 ~ 80	>80 ~ 120	>120 ~ 180	>180 ~ 250	>250 ~ 315		>315 ~ 400	>400 ~ 500	>500
±0.12	±0.18	±0.22	±0.26	±0.31	±0.37	±0.57	±0.80	±0.93	±1.05	±1.15	±1.60	±2.20	±2.50	±2'



Unmarked dimensions refer to 3D model



PCB LAYOUT



2	Nut	Steel	M6/Zn-Ni plated
1	Pin header	Copper	Sn Plated
ITEM	NAME OF PART	MATERIAL	NOTES
螺丝扭矩/Torque Tightening(N · m/Lb.in)			M6, 2.75/24.35
额定电流/Current (A)			110
符合 RoHS 环保要求/Conform to RoHS			Yes

<b>DEGSON</b>		MATERIAL: /	SURFACE/COLOR: /	
APPD: 蓝贵凡 2023.07.21		MAT NO./REV: 10900000260 / 00.01		MAT STATUS: 批量
CHKD: 曹利彬 2023.07.21		NAME		
DRFT: 汪德荣 2023.07.21		K147-00A (H)		
DRAWING NO.	TYPE	DRAWING STATUS	SCALE	SHEET
200205922	CUSTOMER DRAWING	已发布	1:1	1/1

00	/	/	汪德荣	2023.07.21
REV	ECN	DESCRIPTION	DRFT	DATE

Transfer or duplication of this document as well as the utilization or communication of its contents are prohibited unless authorized in general. Violations will be treated for compensation. All rights reserved for patent. activity word or design registrations. 除专利声明外，其他内容均受法律保护。未经许可，不得复制或传播。本公司保留对涉及发明、实用新型及外观设计专利的权利。