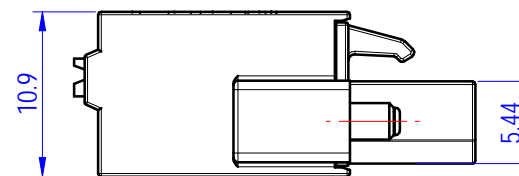
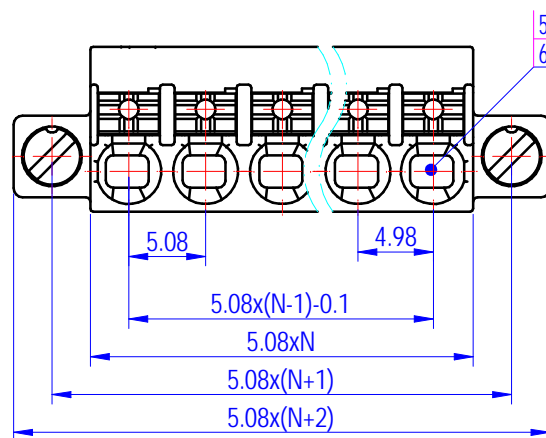
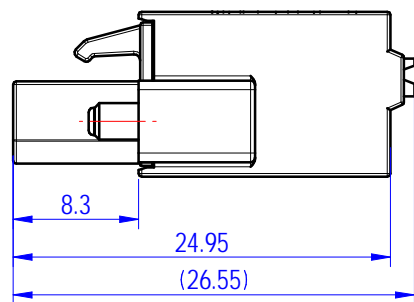
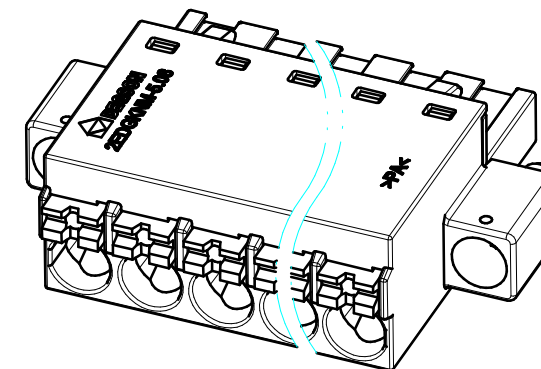
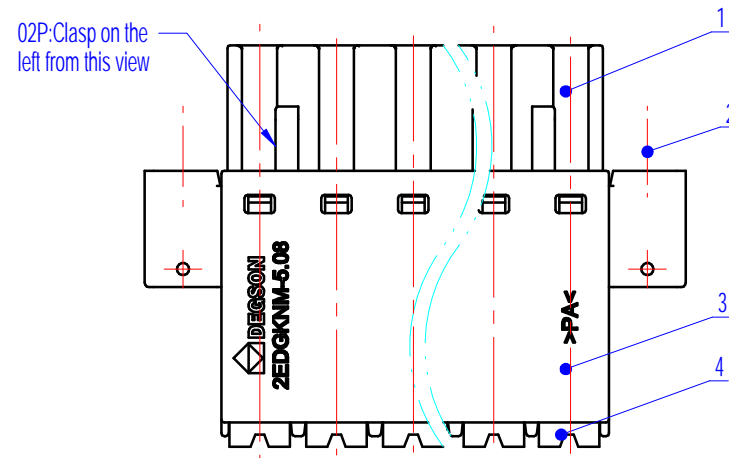


未注公差/General tolerances (mm)											0.1/10 ±2'		
0 ~ 3	>3 ~ 6	>6 ~ 10	>10 ~ 18	>18 ~ 30	>30 ~ 50	>50 ~ 80	>80 ~ 120	>120 ~ 180	>180 ~ 250	>250 ~ 315		>315 ~ 400	>400 ~ 500
±0.12	±0.18	±0.22	±0.26	±0.31	±0.37	±0.57	±0.80	±0.93	±1.05	±1.15	±1.60	±2.20	±2.50



6	Clamp	Copper alloy	Sn Plated
5	Spring	Stainless steel	/
4	Button	PA66+GF	UL94V-0
3	Housing	PA66	UL94V-0
2	Screw	Steel	M2.5/Zn Plated
1	Cover	PA66	UL94V-0

ITEM	NAME OF PART	MATERIAL	NOTES
UL 标准/UL Standard:			
额定电压/电涌/Rated Voltage(V)/Current(A)		B	C D
		300V/10	/ 300/10
IEC 标准/IEC Standard:			
过压类别/Overvoltage Category/污染等级/Pollution Degree		III/3	III/2 II/2
额定电压/电涌/Rated Voltage(V)/Current(A)		320/12	400/12 630/12
额定脉冲电压(KV)/Rate Impulse Voltage(KV)		4	4 4
螺丝扭矩/Torque Tightening(N·m/Lb.in)		M2.5, 0.4/3.54	
线径范围(硬线和软线)/Wire Range(rigid and flexible)(AWG/mm²)		24~16/ 0.2~2.5	
间距/Pitch(mm)/线数范围/Poles		5.08/N=02~24P	
剥线长度/Stripping length(mm)		11	
使用温度范围/Operating temperature(°C)		-40~+105	
符合RoHS环保要求/Conform to RoHS		Yes	

		MATERIAL:	SURFACE/COLOR: PANTONE 556C		
APPD:		MAT NO./REV:	/ 00	MAT STATUS: 小批量	
CHKD:		NAME			
DRFT:		2EDGKNM-5.08-XXP-1Y-00Z(H)			
REV	ECN	DESCRIPTION	DRFT	DATE	
00					
DRAWING NO.		TYPE	DRAWING STATUS	SCALE	SHEET
200031088		CUSTOMER DRAWING	work	2:1	1/1

Transfer or duplication of this document as well as the utilization or communication of its contents are prohibited unless explicit authorization is granted. Violations will be liable for compensation. All rights reserved for patent, utility model or design registrations. 除经书面许可外, 复制或传播本文件内容, 或在本文件基础上, 复制或进行任何形式之修改, 均属侵权行为, 本公司保留追究法律责任。 未经授权, 禁止复制或传播本文件内容。 所有权利保留。