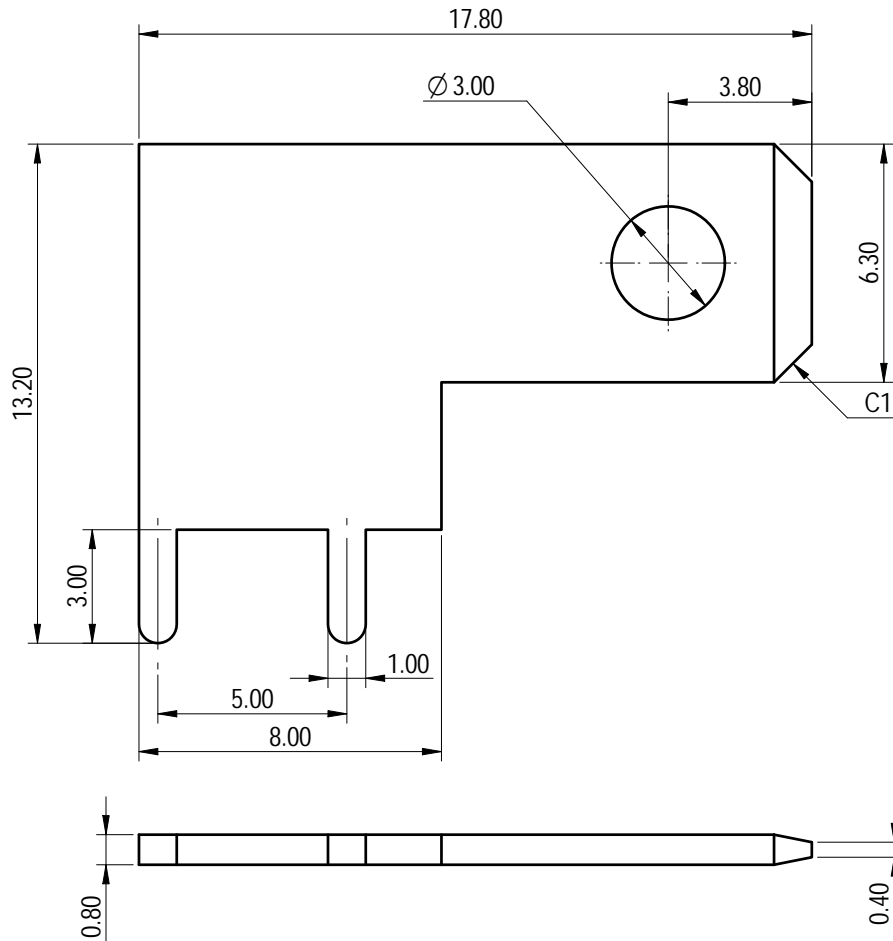


未注公差/General tolerances(mm)													0.1/10
0 ~ 3	>3 ~ 6	>6 ~ 10	>10 ~ 18	>18 ~ 30	>30 ~ 50	>50 ~ 80	>80 ~ 120	>120 ~ 180	>180 ~ 250	>250 ~ 315	>315 ~ 400	>400 ~ 500	
±0.12	±0.18	±0.22	±0.26	±0.31	±0.37	±0.57	±0.80	±0.93	±1.05	±1.15	±1.60	±2.20	±2.50



Note: The A&Z(H) in the name means:A(H) and Z(H).

ITEM	NAME OF PART	MATERIAL	NOTES
1	Pin Header	Copper alloy	Sn Plated
额定电流/Current(A)			24
线径范围(硬线和软线)/Wire Range(rigid and flexible)(mm ²)			4~6
符合RoHS环保要求/Conform to RoHS			Yes

		MATERIAL:	SURFACE/COLOR:		
		MAT NO./REV:1090000037-1 / 00	MAT STATUS: 批量		
APPD: 蓝贵凡	2023.11.07	NAME			
CHKD: 曹利彬	2023.11.07	K27-00A&Z(H)			
DRFT: 姜民浩	2023.11.07	DRAWING NO.	TYPE	DRAWING STATUS	SCALE
A4		200044966	CUSTOMER DRAWING	已发布	5:1
					SHEET 1/1

REV	ECN	DESCRIPTION	DRFT	DATE
00				

Transfer or duplication of this document as well as the utilization or communication of its contents are prohibited unless authorized. All rights reserved for patent, utility model or designs registrations. 非经书面授权, 严禁禁止转让、复制、利用、交加本文件的内容。一经发现侵权必究, 本公司保留对侵权及发明、实用新型和外观设计的所有权利。